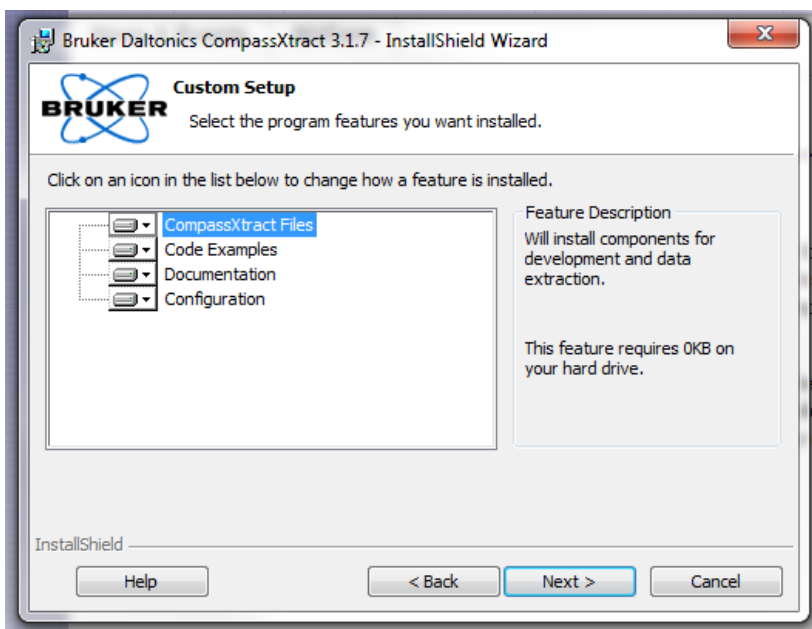


1. Map to the network drive \\imsercdata.northwestern.edu\public
2. Navigate down to MNOVA subdirectory
3. Copy and paste the application file named CompassXtract\_3.1.7 onto your local desk top
4. Double click on the CompassXtract icon from your desk top to run the application
  - a. Do not change the destination folder suggested and click on install button
  - b. A GUI will ask for permission to install the software components, click on allow
  - c. Click on next
  - d. You will see this image



- e. The icons indicate all features will be installed
  - f. Click on next, and then Install
  - g. Finish and reboot your pc
5. Uninstall MNOVA and reinstall from their web site  
<http://mestrelab.com/software/mnova/download/>
6. Ensure that all features are being installed;
7. Features will have an X on them if they are not.
8. After MNOVA installation, open MNOVA application
9. Click on Help on the top ribbon menu, then Get/Install Licenses from the drop down menu
10. The Registration Wizard will open up, click on the Install button on the left.
11. Since you have a network drive map to the public folder, the licenses will be automatically found
12. Click on Northwestern University Campus MNOVA folder
13. All licenses will be installed or asked if you want to replace a previous version. Click yes.
14. For Bruker MALDI-ToF data, copy the data folder to your desktop
15. Go two levels into the folder until you see folder "1"
16. Drag and drop that into MNOVA
17. Right click anywhere on the open spectrum and click on "toggle centroid spectrum"
18. This will make the spectrum to look the same as it appeared in the Bruker flex analysis software